

Charles Causley is acknowledged as one of the finest Twentieth Century English poets. He was awarded the Queen's Gold Medal for Poetry in 1967, a Cholmondeley Award in 1971, a CBE in 1986 and made a Royal Society of Literature Companion of Literature in 2000. He died in 2003.



Photograph courtesy R Tilling MBE RI

The Charles Causley Trust secured Charles Causley's House for the nation in 2006 and intends to open the house to the public to provide an important destination for an understanding of Charles Causley's life and work.

Ted Hughes wrote: "Before I was made Poet Laureate, I was asked to name my choice of the best poet for the job. Without hesitation I named Charles Causley ... A poet for whom the title might have been invented afresh."

Further Information

The Charles Causley Trust

c/o Potter Baker Chartered Accountants
20 Western Road
Launceston
Cornwall
PL15 7BA

Registered Charity: 1102459

To support our work

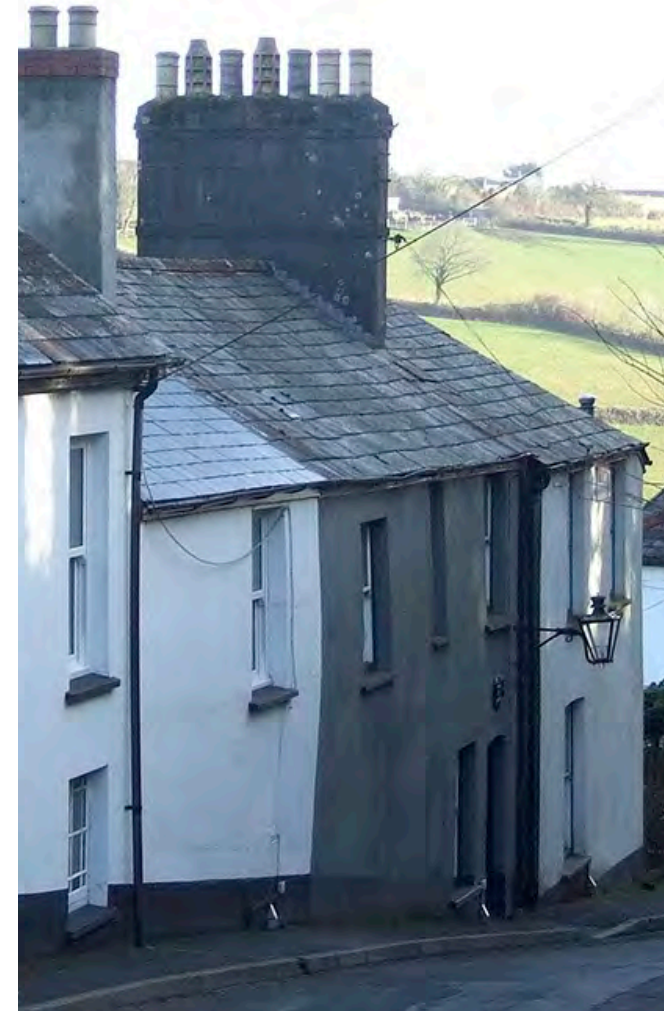
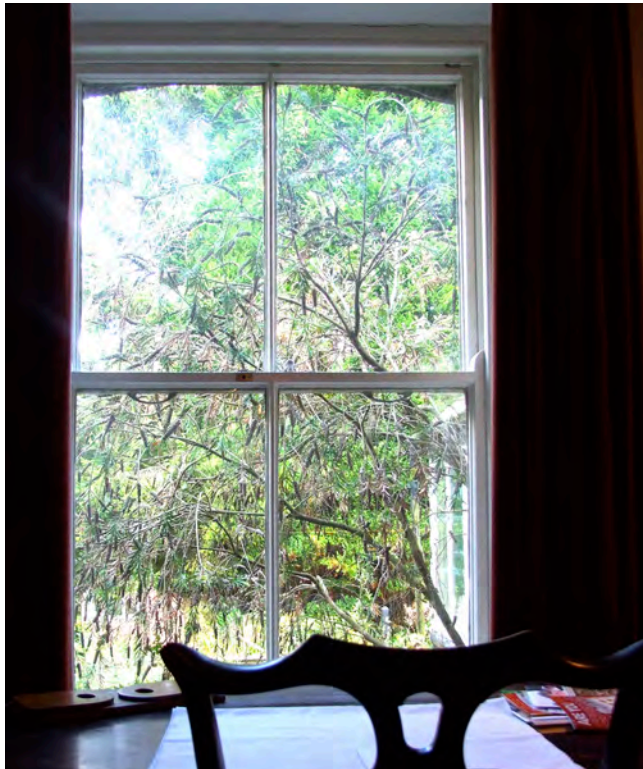
Visit our website at www.thecharlescausleytrust.org where you can find ways to support the development of Charles Causley's House.

Email us

Email us at mail@thecharlescausleytrust.org

Keep up to date

Visit our blog at www.thecharlescausleytrust.wordpress.com



The
Charles
Causley
Trust

Help us to preserve Charles Causley's House



Conservation

The Charles Causley Trust intend to maintain the house with as little change to the original layout, finish and contents as possible.

Immediate Repairs

The house has been empty for six years, and structural deterioration continues to be urgently addressed.

Starting the tour

The Charles Causley Trust hopes to raise money for an interactive display at an external location in Launceston, where tours can begin and visitors can learn about Charles Causley's life and work before setting off on a journey through the poet's Launceston, finishing at the house itself.

Education and tourism

Charles Causley's House can become a key destination for education visits and will offer an exciting new tourist attraction in the area.



Interpretation

Visitors to the house will be able to see where Charles Causley lived and where he wrote his acclaimed poetry.

A large part of the interpretative work of The Charles Causley Trust will be to allow visitors insight into Charles Causley's life and the timeless work he created.



Conservation

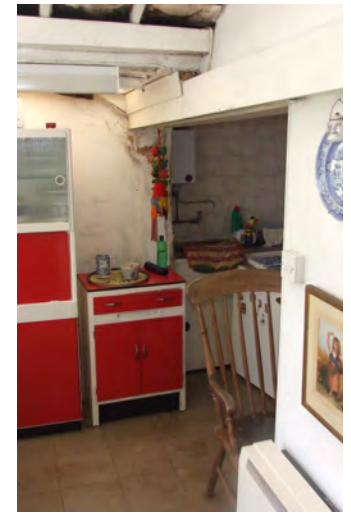
Much of the interior of the house remains exactly as it was in Charles Causley's lifetime.

The house will grow in fascination for visitors as years pass, becoming a time capsule that tells the story of a Twentieth Century poet, his way of life and the people and places that were special to his work.



A long term vision

Charles Causley wrote many of his most famous poems in No 2 Cyprus Well. We feel the house is a place of major cultural significance in the UK, and a property to be protected and shared.



Challenges

The rear extension to the house is one of the keenest challenges for the development, and needs considerable repair.

The Charles Causley Trust is engaged in ongoing feasibility and conservation planning, and continual fund raising. We welcome your support and offer heartfelt thanks to all individuals and organisations who have contributed to our work thus far.

"Among the English poetry of the last half century, Charles Causley's could well turn out to be the best loved and most needed"

Ted Hughes

"There is no place... which has so many thoughts and memories as this belonging to our poetry; And it is almost untouched. Why should we not try and secure it, as Shakespeare's birthplace is secured, for the eternal possession of those who love English poetry all over the world?"

Stopford Brooke, founding chairman of the Wordsworth Trust, in 1891. He helped secure Wordsworth's Dove Cottage for the nation; over one hundred years later it is a beautiful and evocative destination for learning about the poet, his times and our enduring love of writing and reading.